

**LONKING**

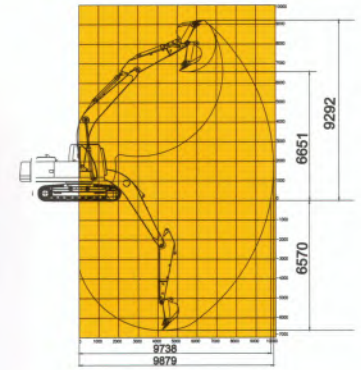
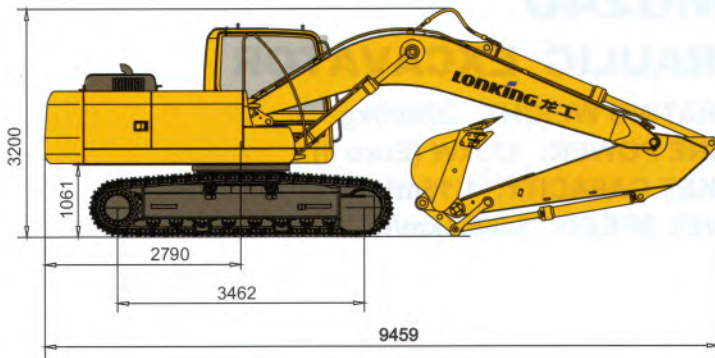


**CDM6225/6225E**  
**HYDRAULIC EXCAVATOR**

- OPERATING WEIGHT: 21800kg
- ENGINE POWER: 112kW (Euro II) /145(Euro IIIA)
- BUCKET CAPACITY: 1.1m<sup>3</sup>
- TRAVEL SPEED: 3.2/5.1km/h

**Features:**

- Cummins TDI turbo 4-cylinder engine
- Air-air inter cooling system with parallel radiator
- Dual-pump double-circuit constant power control hydraulic system
- Multi-purpose true color monitor with large screen
- No frame cab glasses to enlarge the visual field
- High performance and healthy A/C allows the air circulate
- Comfortable suspension seat with hydraulic damper
- Safe and comfortable cabin with 2.7m<sup>3</sup> inner space
- Reasonable layout of robust main frame
- X-shaped undercarriage with heavy-duty box structure
- Free maintenance track with non-lubricated pins
- Heavy-duty boom and arm with high strength low alloy structural steels
- Heavy-duty bucket with high strength and wear-resistant steels



Specifications		CDM6225/CDM6225E	
Operating Weight	Summary	<b>Operating weight: 21800kg</b> The operating weight includes the weight of 5675mm boom, 2920mm standard arm, 1.1m <sup>3</sup> bucket, 600mm track shoes, lubricating oil, coolant, the full diesel oil tank and the rest standard configuration units.	
	Ground pressure	45 kPa	
Bucket Capacity	Standard	1.1 m <sup>3</sup>	
	Option range	0.8-1.1 m <sup>3</sup>	
Engine	Model	Cummins 6BTA5.9-C (Euro II)	Cummins QSB6.7-C190-III(EuroIIIA)
	Rated power	112kW (150hp) /1950 rpm	145kW(190hp)/2000rpm
	Max. torque	614 N.m/1500 rpm	927N.m/1400rpm
	Displacement	5.9 L	6.7L
Hydraulic System	Main pump	Axial variable piston pump	
	Max. flow of system	208×2 L/min	
	Max. pressure of Implements	34.3 MPa	
	Max. pilot pressure	3.9 MPa	
	Swing motor	Piston Type (with safety valve and closed type brake)	
	Swing speed	12.1 rpm	
	Travel motor	Piston Type (with safety valve and closed type brake)	
	Travel speed	3.2 /5.1km/h	
	Gradeability	35°(70%)	
	Max. traction	205 kN	
	Max. arm digging force	105 kN	
	Max. bucket digging force	158 kN	
Fluid Capacity	Fuel tank	380 L	
	Hydraulic oil tank	280 L	
Undercarriage	Standard track shoes width	600 mm	
	No. of track shoes	47 (each side)	
	No. of carrier rollers	2 (each side)	
	No. of track rollers	8 (each side)	
Electrical System	System voltage	24 V	
	Battery capacity	12 V, 120 Ah×2	
Optional Equipments		700mm and 800mm width triple grouser shoes Hydraulic hammer and pipeline Cab protecting nets Track rubber block	